

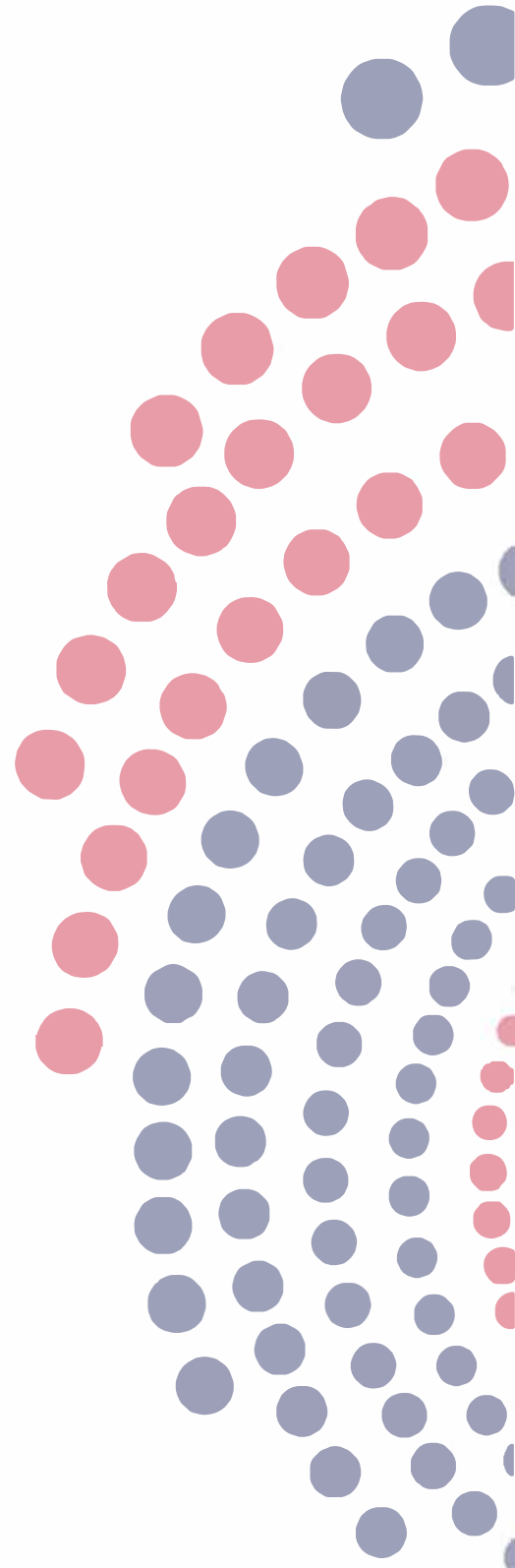


**MGC™**  
HEALTH



**medical**  
group care

# PRODUCT PORTFOLIO



# BATH SAFETY

---



**MGC™**  
HEALTH



**medical**  
group care

PROTECTED WITH  
**MICROBAN®**  
ANTIMICROBIAL TECHNOLOGY

# MGC HEALTH™ BATH SAFETY

MGC HEALTH Bath Safety Products are must-have bathroom aid accessories for caregivers to help aid and care for their loved ones. Quality and safe products are key components when selecting bath safety products. Caregivers can have peace of mind when purchasing from MGC Health because these top-of-the-line products come in MICROBAN Antimicrobial and Anti-fungal Treatment\*.

All MGC Health Bath Safety products are produced by high-quality manufacturers which passed rigorous safety and durability testing by Bureau Veritas, and each shipment has been inspected by SGS. All MGC Health products come with a limited lifetime warranty.



# MGC HEALTH™

## DELUXE ROTATING BATH STOOL



MGC HEALTH Deluxe Rotating Bath Stool is a must-have bathroom aid accessory for caregivers. This bath stool has a padded rotating seat, that locks every 90 degrees to ensure a stable place for the patient to sit when showering and its 360 degrees rotation function permits safe and comfortable bathing from all sides. The padded seat can be adjusted up or down from 16" to 22".



TOOL-FREE ASSEMBLY  
6 Parts Only



### FEATURES

- Padded seat rotates 360 degrees and locks every 90 degrees
- Supports up to 300 lbs.
- The rotating top of the seat can be removed for easy cleaning
- Easy tool-free assembly
- Comes with removable tray for storing personal items
- Seat height can be adjusted from 16" to 23", in 1" increments
- Primary Product Color: White/Blue or Grey/Blue
- Primary Product Material: Plastic and Thermoplastic Rubber

### MGC HEALTH Deluxe Rotating Bath Stool MICROBAN Antimicrobial & Anti-fungal Protection\*

Item Number : IT000034

UPC Code : 860009664517

Outside Legs : 15" W x 15" D x 16" H

Seat Dimensions : 14" W x 14" D x 16" H

Seat Height : 16" - 22"

Product Weight : 6.6 Lbs

Weight Capacity : 300 Lbs

Warranty : Limited Lifetime

\* These antimicrobial properties are built in to protect the product. This product does not protect users or others against bacteria, viruses, germs or other disease organisms.

# MGC HEALTH™ BATH STOOL

## FEATURES

- Opening Price Point Bath Stool
- The rotating top of the seat can be removed for easy cleaning
- Rotating seat locked at 90-degree angles; Comfortable rotating seat that turns in unison with your body
- Supports up to 250 lbs.
- Lightweight made from a corrosion-resistant aluminum frame
- Tool-free assembly, height adjustable, secure, easy to use
- Our Bath Stool is cleared the highest standard in medical shower stool
- Anti-skid, Non-slip: Angled legs provide exceptional stability for the shower chair



**ADJUSTABLE HEIGHT**  
14" - 19"

### MGC HEALTH Bath Stool

Item Number : IT000066

UPC Code : 860009664536

Outside Legs : 15" W x 15" D x 16" H

Seat Dimensions : 14" W x 14" D x 16" H

Seat Height : 14" - 19"

Product Weight : 5 Lbs

Weight Capacity : 250 Lbs

Warranty : Limited Lifetime

# MGC HEALTH™ BATH BENCH

## FEATURES

- Supports 300 Lbs. weight capacity, for safe and comfortable bathing and showering
- Lightweight Aluminum frame, durable and corrosion proof
- Legs are height adjustable in 1" increments, and angle with suction-style tips to provide additional stability
- Easy, tool-free assembly



**ADJUSTABLE HEIGHT**  
14" - 21"



### MGC HEALTH Bath Bench **MICROBAN** Antimicrobial & Anti-fungal Protection\*

Item Number : IT000051

UPC Code : 860009664183

Outside Legs : 19.5" W x 19.5" D

Seat Dimensions : 19.25" W x 11.5" D

Seat Height : 14" - 21"

Product Weight : 5 Lbs

Weight Capacity : 300 Lbs

Warranty : Limited Lifetime

\* These antimicrobial properties are built in to protect the product. This product does not protect users or others against bacteria, viruses, germs or other disease organisms.

# MGC HEALTH™

## BATH SEAT WITH BACK REST



BATH SAFETY

### FEATURES

- Supports 350 Lbs. weight capacity, for safe and comfortable bathing and showering
- Lightweight Aluminum frame, durable and corrosion proof
- Legs are height adjustable in 1" increments, and angle with suction-style tips to provide additional stability
- Easy, tool-free assembly

### MGC HEALTH Bath Seat With Back MICROBAN Antimicrobial & Anti-fungal Protection\*

Item Number : IT000049

UPC Code : 383173000184

Seat Dimensions : 13.5" W x 16" H

Seat Height : 16" - 22"

Product Weight : 8.8 Lbs

Weight Capacity : 350 Lbs

Warranty : Limited Lifetime



# MGC HEALTH™

## BATH CHAIR WITH ARMS & BACK



### FEATURES

- Supports 350 Lbs weight capacity, for safe and comfortable bathing and showering
- Lightweight Aluminum sturdy frame, durable and corrosion proof
- Legs are height adjustable in 1" increments
- Nonslip feet secure bench to the tub



### MGC HEALTH Bath Chair With Arms & Back MICROBAN Antimicrobial & Anti-fungal Protection\*

Item Number : IT000049

UPC Code : 383173000184

Outside Legs : 17"

Seat Dimensions : 13.5" W x 16" D

Seat Height : 16" - 22"

Product Weight : 8.8 Lbs

Weight Capacity : 350 Lbs

Warranty : Limited Lifetime

\* These antimicrobial properties are built in to protect the product. This product does not protect users or others against bacteria, viruses, germs or other disease organisms.



# MGC HEALTH™ TRANSFER BENCH



MGC Health Transfer Bench allows caregivers to safely enter and exit their loved ones from the bathtub. The adjustable transfer bench is built in a lightweight and durable rust-resistant aluminum frame and includes eight (8) leg adjustments to accommodate different bathtub heights.

## FEATURES

- Drainage holes help to prevent water residual which makes the bench more comfortable and less slippery
- Supports up to 300 lbs.
- Seat height adjustments range from 17.5" to 22.5"
- Each leg includes a non-skid, non-slip tip offering security on wet surfaces
- Push-button armrest supports transferring in and out of the bathtub
- Easy, tool-free design for hassle-free assembly in just minutes
- Lightweight and durable the rust-resistant aluminum frame



ADJUSTABLE HEIGHT  
15.5" - 22.5"

## MGC HEALTH Bath Transfer Bench MICROBAN Antimicrobial & Anti-fungal Protection\*

Item Number : IT000052

UPC Code : 383173000166

Seat Height : 15.5" - 22.5"

Product Weight : 13.6 Lbs

Weight Capacity : 300 Lbs

Warranty : Limited Lifetime

# MGC HEALTH™ BATH SUPPORT BAR



## FEATURES

- Supports up to 250 Lbs.
- Rubber-lined pads that won't damage tub surface
- Adjust to fit tub
- Easy, tool-free installation



## MGC HEALTH Bath Support Bar MICROBAN Antimicrobial & Anti-fungal Protection\*

Item Number : IT000053

UPC Code : 383173000284

Dimensions : 14.5" W x 9.6" D x 19"H

Product Weight : 13.6 Lbs

Weight Capacity : 250 Lbs

Warranty : Limited Lifetime

\* These antimicrobial properties are built in to protect the product. This product does not protect users or others against bacteria, viruses, germs or other disease organisms.

# MGC HEALTH™ BED TOILET

Steel 3-in-1 Folding Commode, Includes Seat with Lid, Bucket, Armrests, and Splash-guard.

## FEATURES

- 3-in-1 folding steel commode
- Supports up to 350 lbs.
- Powder-coated steel-welded construction
- Includes 7.5 qt commode bucket with carry handle, cover, and splash shield
- Easily opens and folds for storage and transportation
- Plastic arms for added comfort
- Durable plastic Snap-On seat and lid
- Easy, tool-free installation

**MGC HEALTH Bed Toilet**

**MICROBAN**

**Antimicrobial & Anti-fungal Protection\***

Item Number : IT000054

UPC Code : 383173000218

Dimensions : 14.5" W x 21" D x 19"H

Product Weight : 15.5 Lbs

Weight Capacity : 350 Lbs

Warranty : Limited Lifetime



BATH SAFETY

# MGC HEALTH™ TOILET SAFETY FRAME

## FEATURES

- Fold-able toilet safety rail with adjustable height from 26" to 31" to accommodate standard or elevated toilet seats
- Easy-to-clean aluminum frame mounts securely onto bowl with bracket adjustable from 18" to 24"
- Supports up to 300 lbs.
- Width adjustment between armrests: 8"-24"
- Overall depth at the arm is 16.75"; at the leg is 12"

**MGC HEALTH Toilet Safety Frame**

Item Number : IT000055

UPC Code : 383173000614

Height Adjustable : 26" to 31"

Weight Capacity : 300 Lbs

Warranty : Limited Lifetime



\* These antimicrobial properties are built in to protect the product. This product does not protect users or others against bacteria, viruses, germs or other disease organisms.



# MGC HEALTH™ RAISED TOILET SEAT WITH LOCK & ARMS



## FEATURES

- Front clamping mechanism locks the seat onto the toilet onto the toilet
- Wide, contoured surface raises seat level by 5"
- Seat provides maximum comfort and fits most toilet bowls from 11" to 14"
- Supports up to 350 Lbs.



**MGC HEALTH** Raised Toilet Seat  
With Lock & Arms

**MICROBAN**  
Antimicrobial & Anti-fungal Protection\*

Item Number : IT000054

UPC Code : 383173000559

Weight Capacity : 350 Lbs

Warranty : Limited Lifetime

# MGC HEALTH™ RAISED TOILET SEAT



Raised toilet seats are specifically designed to allow the user to safely and confidently use the restroom without assistance and comfort. This opening price point raised toilet seat is lightweight, portable, and universally sized to fit most commode bowls. Supports up to 300 lbs.



**MGC HEALTH** Raised Toilet Seat  
**MICROBAN**  
Antimicrobial & Anti-fungal Protection\*

Item Number : IT000054

UPC Code : 383173000559

Weight Capacity : 300 Lbs

Warranty : Limited Lifetime

\* These antimicrobial properties are built in to protect the product. This product does not protect users or others against bacteria, viruses, germs or other disease organisms.

# OUR PRODUCT PORTFOLIO



**Bath  
Safety**



**Mobility**



**COVID  
Home Test**



**Pregnancy & Ovulation  
Home Tests**



**Personal  
Care**



**Cough  
Drops**

## OUR COMPETITIVE ADVANTAGE

MGC is 1 of 2 COMPANIES WITH **MICROBAN**™ LICENSE FOR BATH SAFETY PRODUCT



**MGC**  
HEALTH

PROTECTED WITH  
**MICROBAN**™  
ANTIMICROBIAL TECHNOLOGY



# MGC HEALTH™ Products design and artwork are produced by our in house Italian Design Studio







**MGC™**  
HEALTH



**medical**  
group care

PROTECTED WITH  
**MICROBAN®**  
ANTIMICROBIAL TECHNOLOGY



---

**Medical Group Care** manufactures and supplies a versatile portfolio of **MGC HEALTH™** Bath Safety and Mobility Products to our retail customers in private label brands with industry shortest lead times. Our **Microban** license permits **MGC** to supply our **Microban** products in private label brands.



[sales@mgc.us](mailto:sales@mgc.us) | [www.mgc.us](http://www.mgc.us)